

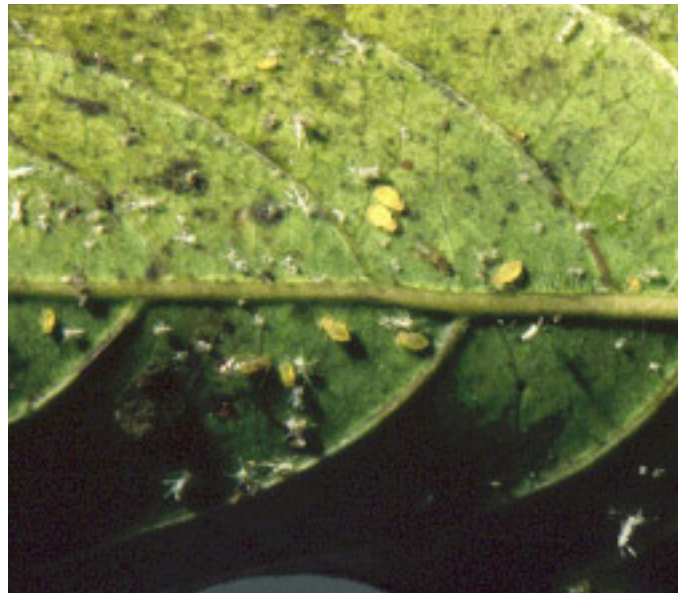


ARBORSCAPES

Tree Management • Plant Health Care
Construction Preservation

Aphids

Aphids, or plant lice, are small soft-bodied insects. They are one of the most common insects found on trees, shrubs, and ornamental garden plants. Aphids feed by sucking the sap from plants, which can cause wilting, leaf curling, and occasionally the dieback of shoots and buds. Aphids excrete a sticky waste material called honeydew that can cover the area surrounding the infested plant. This honeydew attracts ants, yellow jacket wasps, flies, and bees as well as create a place for Gray Sooty Mold to grow.



Aphids on a Crape Myrtle Leaf

Treatment

Treatment for Aphids can be done through foliar insecticide sprays or systemic treatments.